



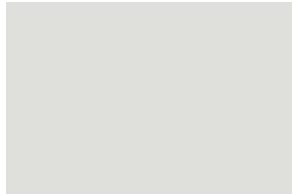
MG-1002 Off White



MG-1772 Sugar Top



MG-1023 ★ Golden Yellow



MG-9012 Halo Skies



MG-1773 Soft Gray



MG-1990 ★ Cool Blue



MG-3016 Crush Pink



MG-1775 Fresh Cream



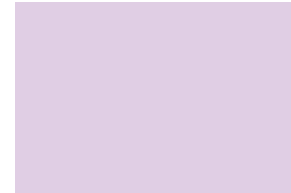
MG-1774 Sand



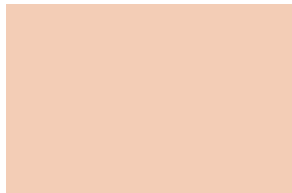
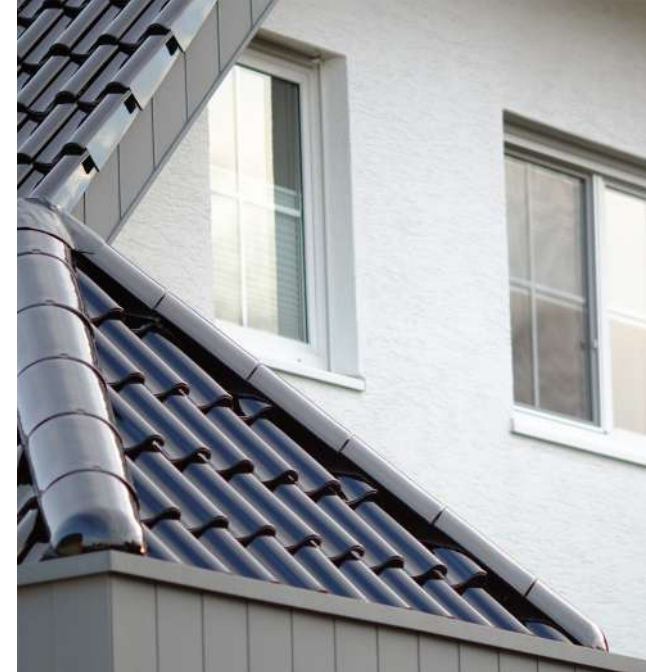
MG-1551 ★ Champagne



MG-1771 Smoke Gray



MG-5029 Purple Charm



MG-1776 Peach Shadow



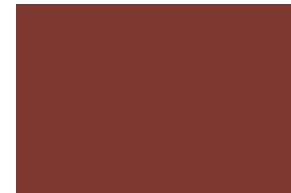
MG-1777 Cream



MG-1553 ★ Spring Green



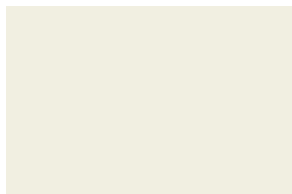
MG-7015 ★ Black



MG-216221 ★ Red Oxide



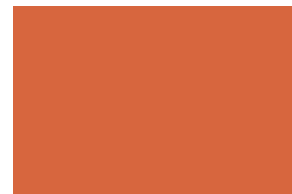
MG-1442 ★ Rich Blue



MG-7013 Platinum



MG-1441 Light Blue



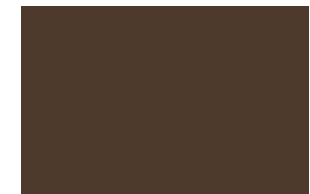
MG-1112 ★ Orange



MG-1552 ★ Scarab



MG-1111 ★ Signal Red



MG-1881 ★ Rich Brown

PRIMER

Markhor's Mark Primer is economical primer based on alkyd resin, suitable for masonry surfaces containing alkalis, where a conventional solvent-based finish is required, it can also be suitable as a sealer on dry cement rendering, concrete, brick work, rough cast, cement sheeting and other forms of masonry. It is recommended for interior and exterior use.



REDOXIDE

Markhor's Mark Red Oxide is an economical quality undercoat with excellent adhesion that prevent the spread of corrosion. Suitable for use on both interior and exterior ferrous metal surfaces, containing corrosion inhibiting and suitable for general use on steelwork.



GLOSS ENAMEL

Markhor's Mark Gloss Enamel is manufactured with suitable alkyd, finest pigments and few important additives. It gives gleam like mirror with tough film and everlasting finish. It can be used for wood or metal trim, doors, walls, furniture, shelving, machinery and equipment, structural steel etc.



MANUFACTURED IN PAKISTAN BY
MARKHOR PAINTS (PVT) LIMITED

AFFILIATED WITH TAC COATING (TURKEY)

Plot #. A-302 & 303, Mehran Town, Sector 6-A,
Korangi Industrial Area, Karachi, Pakistan.

+92 333 6275467 (MARKHOR)

info@markhorpaints.com www.markhorpaints.com

@markhorpaints



AN AFFILIATION WITH
TAC COATING
coating chemistry
Turkey



MARK
GLOSS ENAMEL
(Gloss Finish)